



UNPERMITTED FLEA MARKET AT ECHO PARK LAKE

Andrew Garsten, Chair: Neighborhood Issues Committee

If you've gone by Echo Park Lake on a Sunday over the last several months, you could not have missed it: a giant flea market completely takes over the north and northeast sides of the lake, displacing any possibility of using huge sections of the park for normal use like a quiet stroll or a picnic.

The quality of goods being sold can best be attested to by the fact that a huge amount of what is not sold at the end of each Sunday, is left for Recreation & Parks staff to pick up and put into the trash. The vendors have no permission to sell,

and the congregation of vendors has no permit to use the park. The vendors have reportedly moved to Echo Park Lake from illegal flea markets that had been closed down in other areas in the city. They come from many different areas of LA County for the "free" flea market – and the operative word here is FREE.

Understandably, many people in the neighborhood are upset that this flea market has been going along and growing. Community representatives have been working with the local council offices who have assembled a task force with



(Continued on page 2)

Join Us for Our "Community Celebration"

The Griffith Park Adult Community Club is hosting their annual "Community Celebration" on Saturday, March 6, 2010 from 11 am to 4:30 pm to raise funds to support activities at the Griffith Park Adult Community Center (GPACC), located at 3203 Riverside Drive, South of Los Feliz Blvd. Food and drinks plus live music for dancing will be featured at Friendship Auditorium which is next to GPACC. On the parking lot there will be tents with community resources and in GPACC there will be art work of local artists in the community, handmade and "White Elephant" items as well as a book sale. A silent auction will take place and there will be a raffle prizes donated by local businesses.

Griffith Park Adult Community Center, operated by LA Department of Recreation and Parks opened its doors January 31, 2008. At the end of 2009, GPAC Club had 869

(Continued on page 3)

Echo Park Improvement Association

Meets at 7 p.m. the 1st Thursday of each Month

In Williams Hall at Barlow Hospital 2000 Stadium Way in Elysian Park



(Continued from page 1)

UNPERMITTED FLEA MARKET

representatives from LAPD, Office of Public Safety, the City Attorney's Neighborhood Prosecutor, Public Works Enforcement Division and Recreation & Parks - the people from these departments that have direct responsibility for Echo Park Lake.

So Why Can't The City Simply Close It Down?

In order to understand the problem, we need to go to Venice Beach – yes, Venice Beach. For a long long time, people have been selling stuff at Venice Beach, particularly on the weekends. There are four types of vendor at Venice: the guys that own or rent a store, the guys that rent a table at an official vending area, the people who set up anywhere they want and sell stuff, and the free speech vendors – churches and political organizations. Sometime ago, the City set up an area at Venice for “1st Amendment protected vending for nonprofits, churches and politicians in what came to be known as the ‘Free Speech Zone’.” Of course, one man's free speech is another man's means of making a living, which means that the City botched up keeping commercial vendors out, and the FSZ was overrun with plain old vendors. Not content to simply try to go back to the original intent, a few years ago the City of Los Angeles decided to offer permits by lottery for the FSZ.

The City, of course, still did not know how to discriminate between free speech and commerce, so some free speech vendors got bumped, and the City got sued. The court has been sympathetic. As the case has wended its way through the system, Section 42.15 in the City's municipal code that prohibits commercial selling in public places has been set aside as being overly broad. As a result of all this,

the City of Los Angeles can no longer enforce ANYWHERE the prohibition of commercial selling in public places. Yes, we have problems at Echo Park Lake, but there are problems now all over the city.

The city employees on the task force are frustrated. They completely understand the concerns of the community, but so far the best thing they have been able to come up with is to have a public safety presence at the Sunday flea market, and remove vending from the paved sidewalks. At the latest Task Force meeting, several new suggestions were made that are being investigated. These include:

- Fence the north and east side of the lake, which will need to be fenced when the Proposition O Lake Rehabilitation Project begins in 2011.
- Restrict parking around the lake to 2 hours between 7am to 7pm, 7 days a week.
- Install video surveillance, both to make the lake safer, and also discourage illicit activity.
- Use the “Park Permit” process, which allows permitted congregations in designated areas, but prohibits non-permitted congregations from taking over parts of a park.
- Organize the local community to take out “Park Permits” to displace the flea market, and other measures to take the park back for normal park use.

The City departments are right now investigating each of these ideas. The EPIA has been a participant in the City Task Force meetings. If you have other thoughts or ideas, or you are interested in participating in possible community organizing, please contact the EPIA by email or phone and let us know, or please attend our Neighborhood Issues Committee meetings (see the Calendar).

Ad Rates for the EPIA ways

full page - \$210

half page - \$105

1/4 page - \$60

business card size - \$40

All prices are per issue.

Multi-issue discount available.

Email for questions - EPIAMail@yahoo.com.

NEWSLETTER CREDITS

EDITORS:

STEVEN ARTHUR & LYNN BARBE

ADVERTISING:

DARREN HUBERT

PRINTING:

Thanks to Feeding Birds Boutique and the owners Daisy Alexandra Sylbert-Torres and her husband David Torres

Copyright by Echo Park Improvement Association 2009



JOIN US

for a

!COMMUNITY CELEBRATION!

Saturday ~ March 6, 2010 ~ 11AM - 4:30PM

Griffith Park Adult Community Center & Club

A fundraiser to support our activities at GPACC

Free Parking • Free Admission

3203 Riverside Drive / South of Los Feliz Blvd



LIVE MUSIC

! SILENT AUCTION !

BOOK SALE ~ RAFFLE ~ FOOD & DRINKS ~
COMMUNITY RESOURCES ~ ARTWORK ~ CRAFTS ~
WHITE ELEPHANT SALE

City of Los Angeles, Department of Recreation and Parks



Persons with disabilities are welcome to participate in our programs. Reasonable accommodations will be made with prior arrangements. Achieving gender equity through a continuous commitment to girls and women in sports. The Department of Recreation and Parks is proud to be part of the Mayor's Million Tree Initiative.



GPACC (323) 644-5579

(Continued from page 1)

Celebration

members. The club works closely with Monty Sutherlin, Facility Director, to provide quality programming dedicated to the 50+ population in the neighborhoods of Atwater, Echo Park, Elysian Valley, Los Feliz, East Hollywood, Franklin Hills, and Silver Lake.

The Center includes a library, a computer lab, a nutrition program, and even a room with physical exercise equipment. Classes are taught by teachers from the LA Department of Recreation & Parks and LAUSD Program for Older Adults. In addition, over 20 volunteers are involved in leading or teaching classes and activities.

For more information, call GPACC at (323) 644-5579 and ask to be on a mailing list to get a sample of the monthly newsletter. Club dues are \$10/year and cover a monthly newsletter mailed to your home.



SUNSET BLVD. NURSERY

4368 Sunset Blvd. • Los Angeles, CA 90029

(323) 661-1642

Feeding Birds



A clothing, accessory & home furnishing boutique.

www.Feedingbirdsboutique.com

1825 Echo Park Ave. Suite A
Los Angeles CA 90026

THIS SPACE IS WAITING for YOUR AD

Contact EPIA (323) 882-4835 or
email EPIAmail@yahoo.com for info

Hollywood Production Sound

Audio Services & Equipment Rental for the Industry

In Echo Park since 1998

hpsound.com
213 250 5550

Motion Picture
Broadcast
New Media
Theater
Music



Proudly serving
Echo Park since
2009

allstonyachtclub.com

ALLSTON YACHT CLUB

1320 ECHO PARK AVE

213.481.0454

full bar

small plates dining

good wines by the glass

(213) 353-9994

Fax (213) 353-9968

Mon — Sat
11 am — 7 pm
Sundays —
Group of 10
or more by
Reservation

TIGEORGES' CHICKEN

Catering & Delivery

Wood Burning Rotisserie

309 N. Glendale Blvd
Los Angeles, CA 90026

www.tigeorgeschicken.com

Email: geo4u1@sbcglobal.net

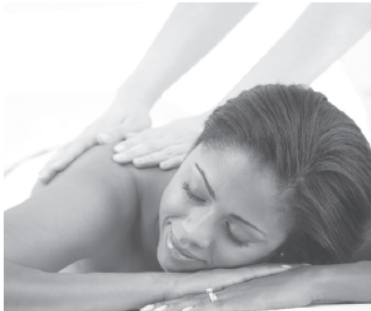
Saturday
Special
Typical
Haitian
Food

We Roast
our own
HAITIAN
Coffee

We Pour
our own
HAITIAN
Coffee -
Try some!



THREE HEALTHY WAYS TO ENHANCE YOUR WELLNESS PLAN



\$49

Introductory
1-hour customized
massage session*



\$59

Introductory
1-hour healthy skin
facial session*



\$98

Introductory
1½-hour Hot Stone
therapy session*

Massage Envy
SPA™

EXCLUSIVELY FEATURING **Murad.** | *m*
Transforming Skincare™

Owned & Operated by Echo Park residents Andrew Garsten & Helen McDonagh
GLENDALE | 333 North Brand Boulevard, between California & Lexington | (818) 246-ENVY (3689)

Franchises Available | **MassageEnvy.com** | Convenient Hours Open 7 days: 8am-10pm

*Session includes massage or facial and time for consultation and dressing. Prices subject to change. Rates and services may vary by location.
Additional local taxes and fees may apply. ©2009 Massage Envy Franchising, LLC.

EPIA can be reached at: EpiMail@yahoo.com, P.O. Box 261021, Los Angeles CA 90026 or (323) 882-4835



Echo Park New Hot Spots and Development Updates

by Darren Hubert

- **New Restaurant's / Beer and Wine bars:**

Nooky Phams – Vietnamese - 1801 Sunset at Lemoyne – Open date TBD; **Mooi – Raw-Vegan** - in the Jensens building at the corner of Sunset and Logan – Open date TBD; **Bedrock Café** at Allesandro and Glendale – Open date TBD; **1642** is expected to open late Feb. to early March. The wine bar located at 1642 Temple near Union.; **El Camino** is expected to feature an extensive CA beer menu with comfort and vegan food options. To be located in the old Studio 1 Theater on Sunset (working with city for CUP).

- **Support our new local businesses:**

Blue Collar Dog Supplies located at 1533 Echo Park Ave.; **Spittfire Girl** located at 2203 Sunset – gift cards, gift boutique shop; **Tavin** – 1543 Echo Park Ave – vintage cloths and gifts; **Echo Country Outpost** – shop gallery at 1930 Echo Park Ave.

- **Active projects (no new updates):**

- **Parking structure** at Glendale Blvd. under the Sunset Bridge, being built for the Angelus Temple. Current use is for church only – 544 spaces;
- **Residential/Retail Development** - Commercial construction on Alvarado at Sunset on the south east side– Residential over street level retail. 20 live/work apartments; **Condo Conversion in progress:** Restoration of brick – 1920's apart-

ment building to condos in Angelino Heights located at 1168 W. Bellevue Ave. Previously a 84 unit apartment building being converted to 55 condominium's.; **Senior Housing Development:** Senior housing project across the street from Angelus Temple along Park Ave. and wraps around to Glendale. 70+ units. Three existing buildings are available at no charge to someone who is capable of moving them. The developer is providing funding to help relocate.



- **Barlow Hospital remodel update:**

Barlow Hospital located at 2000 Stadium Way is in discussions with community groups on the best approach to bring their hospital up to required federal building codes and have minimal impact on the park. Current plans from Hospital are to sell the rights to build 888 units with over 1,000,000sq.ft. For this to work they need to get their desired price. Residential Real Estate market conditions will determine the project's success..

- **Residential/Retail development update:**

2225 Sunset Blvd. – the site of the old EP Community Garden has plans in process with the city to develop 64 residential units with commercial at the street. This has

(Continued on page 10)

NEW LIFE FOR AN OLD HOUSE

by Susan Borden

This old house in Angelino Heights is being prepared for its "Extreme makeover". It will take longer than the TV show, but the house will eventually be restored to its Victorian era glory.

The two storey house at 714 Kensington Road was bought in October 2009 by longtime Angelino Heights residents Murray Burns and Planaria Price. They have already restored dozens of faded Victorian houses on the streets of Angelino Heights. The couple expects it will take a year to fully restore the Italianate home and garden. And, of course, that chain link fence around the front yard will be one of the first things to go, says Planaria.

Built in the late nineteenth century as a single family home, the house was turned into a duplex within a short time, possibly as a result of a financial downturn. Many other changes were made to the original design. As work has begun the new owners have discovered that the large bay window in the side dining room was originally on the front of the house. They plan to reverse the window exchange as part of their plan to turn the house back into a single family home. Sunny, open balconies

will replace outworn covered porches on the front and back walls.

There will be months of hard work, but eventually this ugly duckling will turn into another Angelino Heights swan!





ECHO PARK CALENDAR

Event	Date	Location	Comments
EPIA Meetings	1 st Thursday, 7:00 pm Mar 4, Apr 1	Williams Hall at Barlow Hospital, 2000 Stadium Way in Elysian Park	Email EPIA to get monthly reminders of meetings and to be on email list.
EPIA Steering Committee Meetings	2 nd Monday, 7:15 pm Feb 8, Mar 8	Call (323) 882-4835 for location	Take an active part in EPIA. Join the Steering Committee
Community Safety Meeting (EPSA)	2 nd Thursday, 2:00 p.m. Feb 11, Mar 11	Edendale Branch Library Community room 2011 W. Sunset Blvd.	Hosted by Echo Park Security Association. <u>Call 323-860-9914 for meeting location.</u>
Citizens Committee to Save Elysian Park	1 st Wednesday, 7:00 pm Mar 3, Apr 7	Williams Hall at Barlow Hospital, 2000 Stadium Way in Elysian Park	Call 213-666-9651 for meeting location
Echo Park Chamber of Commerce	3 rd Thursday, 7:00 pm and every Wednesday 1:30 pm	Taix Restaurant.	Call 213-630-3032 for further information.
Greater Echo Park Elysian Neighborhood Council Meeting	4 th Tuesday, 7 pm Feb 23, Mar 23	St. Paul Cathedral Center Great Hall 840 Echo Park Ave Los Angeles, CA 90026	Call (213) 413-3196 for info or visit www.GEPENC.org
Edendale Library Friends Society >=> ELFS <=<	2 nd Wednesday, 7 pm Feb 10, Mar 10	Edendale Branch Library Community room 2011 W. Sunset Blvd.	Join the library's support group and find out how you can help your neighborhood's branch.
Positive Energy Group of Echo Park and Silver Lake Area	4 th Wednesday, 6 - 7 pm Feb, 24, Mar 24	Edendale Branch Library Community room	For info : blog www.positiveenergygroup.blogspot.com
EP Farmers Market	Every Friday, 3pm - 7 pm	parking lot #663 -- half a block south of Sunset Boulevard 323463-3171 x13	
Edendale Book Club	3 rd Monday, 6:30 pm Feb 15, Mar 15		Edendale Branch Library Community room 2011 W. Sunset Blvd.
EPIA NIC committee (Neighborhood Issues)	3 rd Wednesday, 7:00 pm Feb 17, Mar 17	Williams Hall at Barlow Hospital, 2000 Stadium Way in Elysian Park	
SPECIAL EVENT			
Griffith Park Adult Community Club	Saturday, March 6 from 11 am to 4:30 pm	Griffith Park Adult Community Center (GPACC), located at 3203 Riverside Drive, South of Los Feliz Blvd.	

Masa

of echo park

Bakery & Café

1800 W. Sunset Blvd (213) 989-1558 www.MasaofEchoPark.com

ECHO PARK SECURITY ASSOCIATION

Join us for a safe, secure and crime-free
Echo Park and Angelino Heights.

Since 1991.	Alarm response included (24-hour)
Low cost.	Lowered crime rate
Endorsed by EPIA.	Close relationship with police
Volunteer run	Founded by EPIA members.



POLICE	
Police Emergency: Need Police Car	911
Spanish Line	213-928-8222
Narcotic Hotline	1-800-662-2878
Child Abuse Hotline	1-800-540-4000
Police Non-Emergency	1-877-275-5273
LAPD Air Support Division	213-485-2600
RAMPART DIVISION	
Rampart Police Division Desk	213-484-3400 ext 1
Rampart Vice Unit	213-485-4080
Rampart Division Watch Commander	213-485-4062
Senior Lead Officer Ford	213-793-0775
Community Relations	213-484-3400 ext 2
China Town Sub-Station	213-621-2344
NORTHEAST DIVISION	
Northeast Desk	213-485-2563
Northeast Report Unit	213-485-2563
Senior Lead Officer Bobby Hill	213-793-0760
Senior Lead Officer Al Polehonki	213-793-0763
Northeast Detectives	213-485-2566
Northeast Community Relations	213-485-2548
Northeast Gang Detail	213-847-4263
Northeast Youth Referral Program	213-847-3375
Northeast Records	213-485-2568
Release of Impounded Vehicles	213-485-2566
CITIZEN COMPLAINTS	
Department Building & Safety	888-524-2845
Department of Health	1-800-427-8700
Department of Transportation	213-580-1177
Department of Water & Power	800-342-5397
Parking Enforcement	311
Loose/Stray Animals/Barking Dogs	888-452-7381
LA County Department of Consumer Affairs	213-974-1452
Legal Aid Client Referral	1-800-399-4529
Operation Bright Lights	311
Street Lighting Repairs	311
Professional Helicopter Pilots Association	213-891-3636
GRAFFITI RELATED ISSUES	
Report Graffiti	311
Free Paint	311

CLEAN-UP	
Abandoned Vehicles	311
Cars Parked in Yards	1-888-524-2845
Hazardous Waste Disposal Information	1-800-988-6942
Parkway and Median Maintenance	1-800-996-2489
Storm Drains	213-485-5391
Trash and Bulky Item Pick Up	1-800-773-2489 FAX 213-847-2261
L. A. Fire Department Brush Clearance	818-374-1111
COMMUNITY SERVICES	
Copies of Crime and Traffic Reports	213-485-4193
El Centro del Pueblo	213-483-6335
Echo Park Library	213-250-7808
Edendale Library	213-207-3000
Echo Park Recreation Center	213-250-3578
Echo Park Chamber of Commerce	213-630-3032
Dodger's Security	323-224-1363
Dodger's Neighborhood Focus	323-224-2636
Dodger's Community Affairs	323-224-1435
Central City Action Committee	213-241-0908
North Central Animal Shelter	213-847-1416
L.A. City Department of Aging	800-834-4777
Elysian Park Ranger	323-913-4688
Health Information	211
Los Angeles City Information	311
Los Angeles City Information website	www.lacity.org
Congresswoman Lucille Roybal-Allard	213-628-9230
State Senator Gil Cedillo	213-612-9566
Assemblyperson Kevin de Leon	323-225-4545
LA County Supervisor Gloria Molina	213-974-4111
Mayor's Office mayor@lacity.org	213-978-0600
Neighborhood Prosecutor Program	213-847-8045
POLITICAL	
1st District Ed Reyes	213-485-3451
13th District Eric Garcetti	323-957-4500
Congressman Xavier Becerra	213-483-1425
Congresswoman Lucille Roybal-Allard	213-628-9230
State Senator Gil Cedillo	213-612-9566
Assemblyperson Kevin de Leon	323-225-4545
LA County Supervisor Gloria Molina	213-974-4111
Mayor's Office mayor@lacity.org	213-978-0600
Neighborhood Prosecutor Program	213-847-8045



**EDENDALE LIBRARY FRIENDS
OFFERS FREE TICKETS TO DISNEYLAND**

Edendale Library Friends Society (ELFS) is partnered with Disneyland for the Give a Day Get a Disney Day promotion. Volunteers who donate time to the ELFS will get a free ticket to Disneyland. Offer is limited so SIGN UP while tickets last!


Go to www.DisneyParks.com
And Register Now!

Click on the box that says
GIVE A DAY GET A DISNEY DAY
Click the box that says
GIVE AND GET IN 3 SIMPLE STEPS
Type in ZIP CODE 90026 and pull down
EDUCATION & TECHNOLOGY
Scroll down to find which Edendale opportunity
appeals to you
Click on **MORE DETAILS**
Fill out the form to identify yourself

ELFS will get back to you.
Preferential dates booked for ELFS Members
See you at Disneyland!!

**GREAT BACKYARD BIRD
COUNT**

*Sunday, February 14, 2010
Echo Park Lake Boathouse, 9:00 a.m.*




Discover the birds in your backyard, schoolyard or park. It's fun, it's free and it helps the birds. All ages and skills welcome.

Whether you are brand new to birding or an expert, your count counts!

Your checklist will contribute valuable information for science and conservation.

Join the Echo Park Lake bird team --
Sunday, Feb. 14., 9:00 a.m. Meet at the Boathouse (Echo Park Ave. and Laguna Ave.) About 2 hours.

For more information, contact Judy Raskin at judycalifornia@yahoo.com or call (323) 663-6767. The GBBC runs four days, February 12-15. To participate on other days or at home, get more information at www.birdcount.org.

<h2>EDENDALE LIBRARY</h2>		<h2>ECHO PARK LIBRARY</h2>	
Library Address		Library Address	
Edendale Branch Library 2011 W. Sunset Boulevard Los Angeles, CA 90026 Phone (213) 207-3000 FAX (213) 207-3097	Library Hours	Echo Park Branch Library 1410 W. Temple Street Los Angeles CA 90026 Phone 213.250.7808	
	Mondays 10:00 am – 8:00 pm Tuesdays 12 noon – 8:00 pm Wednesdays 10:00 am – 8:00 pm Thursdays 12 noon – 8:00 pm Fridays 10:00 am – 6:00 pm Saturdays 10:00 am – 6:00 pm Sundays CLOSED		
World Wide Web Address	http://www.lapl.org	24 Hour Renewal:	888-577-LAPL



Echo Park Bird Count



BIRDERS REJOICE AT NEW HIGH COUNTS 36 Species at Echo Park Lake 14 at Vista Hermosa Park

by Judy Raskin

The Echo Park Lake team counted 36 species at Echo Park Lake during the annual 2009 Christmas Bird Count, plus an additional one during count week, to set a new record for bird species at the lake at one time. The 21 person team – another new high – needed about 2-1/2 hours on a clear day to achieve the count, which totaled 1025 individual birds.

Although the total of birds was not a new high, it was significantly higher than 2008's total of 542. This year saw the addition of two species that had never been at the lake before, the Spotted Sandpiper – whose usual habitat is muddy areas of streams and seashores – and the California Towhee. For the fifth year in a row, Ross's goose was here too.

Local residents who took part included Jeff Horton, Langdon Faust, Mary Brooks, Thea Wang, Marie Vester, Mary Lumkin, Jenifer Palmer-Lacy, Gloria Gwynne and Judy Raskin. Miguel Luna of Angelino Heights, director of Urban Semillas, supervised a group of students from the Compton area.


A few hours later, Raskin and Jocelyn McFaul reconnoitered Vista Hermosa Park. This was the second year for this park. First timers at VH were the bushtit, California Towhee and the white-crowned sparrow. This year's total was 14 species and 39 individuals. Last year, 2008, the count was 12 and 49.




CONSTRUCTION-DESIGN
JOHN BORDEN
2024 VALENTINE ST
L.A., C.A. 90026
323-665-0318

Borden Construction

LICENSED #455256




Member
American Optometric Association

Fredy Perez, O.D.
Examination and Treatment of the Eye

1509 Sunset Blvd.
Los Angeles, CA 90026

By Appointment
(213) 250-5768



ENERGY EFFICIENCY
SOLAR ELECTRIC SOLUTIONS

The sun never sends a monthly bill!®
MAKE YOUR OWN ELECTRICITY

We help you with the LADWP rebates
call for a
free site visit & estimate
(909) 865-8561

www.eesolar.com

EXPERT • EXPERIENCED • ENVIRONMENTALLY AWARE

Steven Arthur, Efficient Energy Specialist



(Continued from page 5)

Echo Park Hot Spots

been an ongoing project for many years at this point. The project is at the corner of Rosemont and Sunset that presents traffic access issues. The solution the developer has offered is to bring in all residential traffic from the Elsinore St side. They own one lot that will connect with the Sunset property.

If you have a question or comments about a development project please contact EPIA Neighborhood Issues Committee. They can be reached at epia-mail@yahoo.com and the committee meets the third Wednesday of every month at 7:00pm Barlow Hospital located at 2000 Stadium Way @ Williams Hall. You can also go online and post your comments at the EPIA NIC forum at http://groups.yahoo.com/group/EPIA_NIC/.



1911 SUNSET BOULEVARD
LOS ANGELES, CA 90026
(213) 484-1265

Dynamic. Stylish. Seriously. Cool. Hip

It's Thai
Hometaurant



**NO MSG. NO HYDROGENATED OIL
VEGETARIAN DISHES AVAILABLE**

MON-FRI AM- 11:00-10:30-PM

1311 Glendale Blvd

SAT- 11:30-AM-10:30-PM

LA, CA 90026

SUN-11:00-AM-10:00-PM

P:213-484-9383

www.itsthai.com



**GREEN RESTAURANT ASSOC.
FREE DELIVERY. MINIMUM \$ 15- WITHIN 3 MILE RADIUS
CATERING TRAY AVAILABLE
VISA. MASTER ACCEPTED. MINIMUM \$15**

30 Year resident of
90026

Your local Real Estate Professional

Darren Hubert

(DRE: 01330183)

www.UrbanHillsides.com

Darren@UrbanHillsides.com

323.898.2991

HRC (Certified Home Retention Counselor)
CFS (Certified Foreclosure Specialist)
Experienced Short Sale agent



(213) 484-1116

MELBA MORRIS

Ballet Studio

- Pre-Ballet Thru Advanced
- Boys Program
- Workshop

1625 GLENDALE BLVD.
LOS ANGELES, CA 90026





Central City Action

by Gloria

CCAC –what is new with us you all are probably saying? Well thanks to everyone who helped make our holiday rummage sale a huge success. Maryanne and the kids sorted, priced and sold much wanted items to the neighbor and others who passed by the fire station. Thanks to all who helped me post the information about the rummage sale over the internet. We had people lined up outside before we opened the doors. We had to schedule the rummage sale before the holidays so the kids could plan for the first week of January. We have about 35 kids who come every day so it takes quite a bit of money to take them somewhere. Miguel, Sam’s brother, helped us during the holidays so we could take two vans.

Thanks, Miguel!



Starting at the beginning of December, we painted faces for Councilman Ed Reyes party in Elysian Park. It rained but we still painted faces. About the second week of December we painted faces at another location for the Councilman. And of course we had our entry for the Echo Park Holiday parade. Thanks to Christine Peters for her help in obtaining the outfits for our elves.

The kids wanted to see Avatar so off they went and came back to tell me how great it was. George, one of the kids, came into my office after the movies wearing glasses. He told me they were new. Shortly after he came in the other kids arrived with glasses. I guess the 3D glasses are hard plastic frames now. Honestly the glasses looked real. The weather was so warm it was off to the Zoo. The kids told me that they saw Sam inside a cage but then realized it was a monkey. On one of their days off before New Years, David Bermudez arranged a trip to the Rose Bowl to participate in cutting the flowers for the floats. Then the kids got on the Gold Line and were picked up in Chinatown. We ordered pizza that week and it was eaten in one sweep. On Friday the kids went to Long Beach to the Aquarium of the Pacific. Again it was a beautiful day so after the aquarium everyone went to Shoreline Village. Cannot remember which day it was but the kids got to go ice skating at LA LIVE. Just looking around LA

LIVE is an experience; imagine skating and being a part of the LIVE.

So now the holidays are over and it is back to school. The kids have been a little quiet this week as they sit down to do homework as soon as arrive at the center. We are trying to put away all the excess rummage but somehow the pile just keeps getting bigger and bigger. We will probably not have another one till the kids are out for Spring break. That just gives us longer to get more valuable items to sell. If anyone has not been to one of our sales, try to make it this year. You will be pleasantly surprised.

By the way, a few days ago I heard someone making noise outside my office early in the morning. I kept getting up and looking but no one was to be seen. I told the kids and several of them are in agreement that it was Captain Rollo sending me a message. Don’t know what the message is but maybe it will come later.

LIONS CLUB

OF LOS ANGELES
THE L.A. "HOST" CLUB



We Serve
FIGHTING BLINDNESS,
PRESERVING SIGHT, AND
SUPPORTING OUR YOUTH.

THE ECHO PARK THING TO DO:
Join us in service
to the community.

For information, contact Dr. Fredy Perez
(213) 250-5768 • fperez001@aol.com



FREE JOB FAIR



SAVE THE DATE

SATURDAY MARCH 6, 2010

**15th Annual Community
JOB & Information Fair**

**at
Los Angeles Dodger Stadium**

1000 Elysian Park Avenue
Los Angeles, CA 90012

10:00 am - 1:00 pm

For more information contact:

Employment Development Department

East Los Angeles Job Service

Maria Nevarez or Griselda Ramos

(323) 869-2505 or (323) 271-3241

This event is co-sponsored by Government
Agencies in the Los Angeles area

FREE OF CHARGE



LA Marathon New Route Stadium to the Sea

by Darren Hubert

The New route for the LA Marathon begins at Dodger Stadium. The "Stadium to the Sea" route takes participants and their supporters through some of Los Angeles' iconic and familiar-the-world-over city and county sights and neighborhoods, including El Pueblo, City Hall, and Cathedral of Our Lady of the Angels in Downtown; Grauman's Chinese Theatre, Hollywood & Vine, and the Sunset Strip in Hollywood; Rodeo Drive in Beverly Hills; and from Century City through the Westside to the finish at the shore of the Pacific at Santa Monica Boulevard and Ocean.

Consideration of altering the route came from passionate groups of people who yearned to see the race from the perspective of not only the participants but to global spectators watching on television. The new route showcases the landscape and landmarks we're known for. One runner published an Op-Ed in the Times noting that the race was "visually deadening." Her suggested route: "To take in some of the city's more memorable sights, runners could start at Dodger Stadium, go through Chinatown, then up Sunset Boulevard to Hollywood, on to Beverly Hills and Westwood, and finishing at the beach in Santa Monica." Well whadda ya know?

The 2010 LA Marathon takes place on Sunday March 21, 2010.

We need your help

This year we had donations from printers, other community groups and residents that has allowed us to continue to product our newsletter. Due to the cost of printing we run a deficit with each newsletter produced. This is not something that the EPIA can sustain for a long period of time if donations stop coming in. Therefore we are attempting to raise funds for continued support of the newsletter.

Thank you in advance for your Support.

Donation Amount: _____

All contributions are appreciated equally

- For Newsletter Only
- For any EPIA community project or event

Send your Tax Deductible Check Payable to:
Echo Park Improvement Association (EPIA)
PO Box 261021, Los Angeles, CA 90026

Opinions expressed in this newsletter are those of the writers and do not necessarily reflect the position of EPIA.

EPIA can be reached at: EpiaMail@yahoo.com, P.O. Box 261021, Los Angeles CA 90026 or (323) 882-4835