



## LADWP Reneges On Reservoir

*by Sallie Nuebauer*

The Los Angeles city budget crisis has contaminated a proposed solution for Elysian Reservoir. The Department of Water and Power staff is trying to renege on the previously decided 2008 DWP Commission vote for landscaped buried tanks as the preferred alternative for the Elysian Reservoir Environmental Impact Report. An April 6 staff report has recommended changing the preferred alternative to an aluminum cover with solar panels. However, the item has been deferred because the commissioners requested more information. There are three new commissioners since the 2008 vote.

This is a horrible insult to our community. Members of the Citizens Committee to Save Elysian Park and other community groups citywide forming the Coalition to Preserve Open Reservoirs met in mediation with DWP staff for 18 years to find acceptable solutions for all the open reservoirs. (Stricter



State and Federal Water Quality Standards mandate that DWP either cover/enclose or build filtration plants for all its open drinking water reservoirs. The cheapest solutions are floating or aluminum covers; the most expensive: buried tanks and filtration plants.)

The mediation process included community meetings at which surveys were handed in. DWP staff presented four options for the community's consideration: a floating cover, an aluminum cover, an aluminum cover with solar panels and landscaped buried tanks. The returned surveys were 99% in favor of the most expensive, time-consuming alternative of landscaped buried tanks because it is the only solution that will preserve the beauty of the 40 acre park canyon and it will provide 14 new acres of usable parkland. Our Neighborhood Council supports the landscaped buried tanks as well. All of the other reservoirs involved in the

*(Continued on page 4)*

## COMMUNITY SAFETY MEETING RETURNS TO ITS OLD HOME

Echo Park Security Association announces its monthly community safety meeting will return from the Edendale library community room to the former LAPD Stop In location, now the offices of the Greater Echo Park Elysian Neighborhood Council.

The library on Sunset Boulevard has been a comfortable home while the Stop In was being refurbished for the Neighborhood Council. However the library community room is in great demand and the Neighborhood Council has kindly made its office available at a time that fits EPSA's schedule.

The community safety meeting, which is open to all, will be held on **the third Wednesday of the month at 2:00 p.m.** The initial meeting was on April 21. The Neighborhood Council office is on the southeast corner of Sunset Boulevard and Echo Park Avenue, behind the Bank of America.

The EPSA has sponsored regular community safety meetings for several years to give residents a chance to talk directly to their LAPD officers as well as City Attorney representatives and Council deputies.

For more information about Echo Park Security Association, call 323-860-9914 or go to [www.echoparksecurity.com](http://www.echoparksecurity.com).

**Echo Park Improvement Association**

*Meets at 7 p.m. the 1st Thursday of each Month*

In Williams Hall at Barlow Hospital 2000 Stadium Way in Elysian Park



## Echo Park Branch Library Buzzing with Activity

by Margarita Fernandez, Library Patron

The Echo Park Branch Library is a wonderful modern structure located on the corner of Temple and Douglas Streets surrounded by attractive trees. The staff at the library always welcomes their clientele with a friendly smile as they know the regulars and, of course, a welcoming smile to their new patrons. It is always a joy to see the interaction between staff and patrons. The library is constantly buzzing with activities and programs to be enjoyed by the patrons from lap sitting toddlers to adults.

While a lot of the programs are meant for the young, adults also benefit from the various programs offered at the library. Under the leadership of Erica Silverman, adult patrons have been able to enjoy programs such as a writing course which is offered twice a month on Saturday's at 10:00am. This program has a large following as the patrons learn how to put life's experience's onto paper. They discuss issues and help each other when someone encounters writer's block.

The camaraderie that is found among the group is a warm one and they look forward to the next class. Other favorites are listening to authors speak about their books and listening to music.

A number of authors have come

to the Echo Park Library to speak to the Adults, and they have brought their books. One such author is Pennny Mickelburg, a mystery writer of such books as *Murder Too Close*, *Two Graves Dug*, and *One Must Wait*. Penny's reading was so enchanting that we wanted her to continue reading so that we could

music sounds in the room. Children, also go to hear wonderful music and some of them say that they play instruments, and why not? Several of them attend Placencia Elementary, which has an excellent orchestra program.

Gardening has been offered, as has Jewelry making which was such



learn who had committed the crime, but like all mystery writers, we were left to read the book. Another author was Reyna Grande who wrote *Across a Hundred Mountains and Dancing with Butterflies*, which deal with migration issues.

A big favorite for programs is Music. The Echo Park Branch Library has a big multi-purpose room and its acoustic serves all music well. The UCLA Gluck - Strings, Winds, Brass Quartet have played and commented how nice the

a big hit with everyone that three workshops have been offered. These are some of the programs that been offered at the library for Adults and which the Branch hopes to continue to offer, but due to City budget cuts, the staff hours are being cut. Nevertheless, it can be assured that the Echo Park Library with its staff at the helm will continue to be buzzing with activities excitement as the patrons continue to utilize the library.

### davco printing

4767 sunset blvd., # 7  
hollywood, ca 90028  
tel 323-466-9591  
fax 323-466-9593  
davcoprinting  
@sbcglobal.net

- 1 - 4 color printing
- color digital output
- color poster output
- h/w digital copies
- oversized lamination

call DAVECO for quantity quotation

### NEWSLETTER CREDITS

#### EDITORS:

STEVEN ARTHUR & LYNN BARBE

#### ADVERTISING:

DARREN HUBERT

#### PRINTING:

DAVECO

Copyright by Echo Park Improvement Association 2009



## CLIFFORD STREET SCHOOL 2150

### Blue Ribbon School Now offering 6<sup>th</sup> grade and Pre-School!

Clifford Street School is now enrolling 6<sup>th</sup> graders for the 2010-2011 school year as well as grades Kindergarten through 5<sup>th</sup> as always. We are also taking applications for pre-school for all students who turn 3 or 4 by December 2<sup>nd</sup>, 2010. Feel free to call us @ (323) 663-0474 or stop by our office located at 2150 Duane Street, Los Angeles, CA 90039.

Clifford Street is a Blue Ribbon School, part of the federal NCLB law, recognized as academically superior and having demonstrated dramatic gains in student achievement. Our staff provides an outstanding educational program. We are a small school of 200 students, tucked against the hillside in Echo Park.

We look forward to getting the opportunity to showcase our programs.



### SUNSET BLVD. NURSERY

4368 Sunset Blvd. • Los Angeles, CA 90029

(323) 661-1642

### Feeding Birds



A clothing, accessory & home furnishing boutique.

[www.Feedingbirdsboutique.com](http://www.Feedingbirdsboutique.com)

1825 Echo Park Ave. Suite A  
Los Angeles CA 90026

## THIS SPACE IS WAITING for YOUR AD

Contact EPIA (323) 882-4835 or  
email [EPIAMail@yahoo.com](mailto:EPIAMail@yahoo.com) for info

### Hollywood Production Sound

Audio Services & Equipment Rental for the Industry

In Echo Park since 1998

[hpsound.com](http://hpsound.com)  
213 250 5550

Motion Picture  
Broadcast  
New Media  
Theater  
Music



Proudly serving  
Echo Park since  
**2009**

allstonyachtclub.com

**ALLSTON YACHT CLUB**

**1320 ECHO PARK AVE**

**213.481.0454**

**full bar**

**small plates dining**

**good wines by the glass**

(Continued from page 1)

### TAKE ACTION ON ELYSIAN PARK RESERVOIR

mediation process to date have been resolved in a manner acceptable to the surrounding communities.

Elysian Reservoir is the only reservoir located in a park. Elysian is an extremely important regional park for many inner city families. It is also historically significant in that it is part of the original Pueblo de Los Angeles, and our city's oldest park.

Please reiterate your support for the landscaped buried tanks. Our communities deserve nothing less.

Address your letters to:

Lee Canon Alpert, President

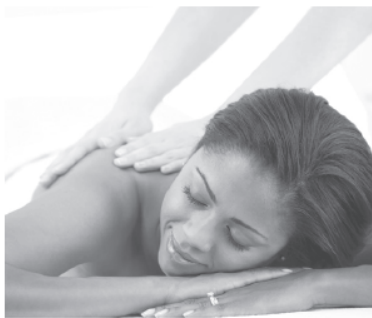
Board of Water and Power Commissioners

Department of Water and Power of the city of Los Angeles

111 North Hope Street, Room 1555-H



### THREE HEALTHY WAYS TO ENHANCE YOUR WELLNESS PLAN



**\$49**

Introductory  
1-hour customized  
massage session\*



**\$59**

Introductory  
1-hour healthy skin  
facial session\*



**\$98**

Introductory  
1½-hour Hot Stone  
therapy session\*

**Massage Envy**  
SPA™

EXCLUSIVELY FEATURING **Murad** | *m*  
Transforming Skincare™

Owned & Operated by Echo Park residents Andrew Garsten & Helen McDonagh  
GLENDALE | 333 North Brand Boulevard, between California & Lexington | (818) 246-ENVY (3689)

Franchises Available | **MassageEnvy.com** | Convenient Hours Open 7 days: 8am-10pm

\*Session includes massage or facial and time for consultation and dressing. Prices subject to change. Rates and services may vary by location.  
Additional local taxes and fees may apply. ©2009 Massage Envy Franchising, LLC.

EPIA can be reached at: EpiMail@yahoo.com, P.O. Box 261021, Los Angeles CA 90026 or (323) 882-4835





## The Hard Streets of Elysian Heights

by Susan Borden

Local residents know that streets in Elysian Heights are some of the steepest in California. These hilly streets are paved with concrete, deeply grooved and scored to increase traction on narrow roadways. When it rains, sometimes water gets under the concrete and washes away underlying soil, leaving only a crust of pavement above a concealed sinkhole.

My husband John acted as contractor when he built our home in hilly Elysian Heights several years ago. Ordering a concrete delivery for the foundation, he warned the truck driver to follow our directions. Don't take Baxter Street, even though it looks like the most direct route on the map, John said. Your truck won't make those grades. Most sub-contractors rely on their Thomas Guide to get them to the work site on Valentine Street. But you can't tell how steep Baxter Street is by consulting the map.

Well, we waited in vain for that cement truck. The confused driver had turned on infamously steep Baxter Street. Unfortunately the cement mixer truck—one of the heaviest vehicles on the road—broke the street just west of Echo Park Avenue and fell into a cavity that swallowed it all the way to its axles!

Although well and truly stuck, the truck didn't fall over as the driver feared (and as the kids who came running out hoped). It was safe to keep the mixer churning.

Could our concrete company locate an oversized tow truck and get the huge broken-down mixer truck out of its six-foot deep hole before all that concrete deteriorated into expensive uselessness? If the concrete took too long to reach us, it would be weakened and our foundation could collapse later on.

As well as paying for the concrete, we were also on the hook for the pumper waiting at our house.

At long last the cement company got the truck towed. Three hours later the mixer drove the couple of blocks to our hillside home. Our concrete was pumped as fast as humanly possible.

And the deep hole that remained on Baxter Street? Until the city street division repaired it, the transportation department posted a watchman to stand by the gap and warn cars away. Today you can still see outlined on Baxter Street the edges of the patched hole, a few feet west of Echo Park Avenue.

### 4th Annual

### Citizens Committee to Save Elysian Park Fundraiser Banquet

**Sunday, June 6, 2010**

#### TIME

**5:00 pm** Cocktails and Hors d'oeuvres. No-Host bar. Music on the green: I See Hawks in L.A.

**6:30 pm** Dinner

**After dinner:** Dessert and coffee, and CCSEP Raffle with the best prizes in town!

#### LOCATION

Grace E. Simons Lodge, Elysian Park (free parking)

#### MENU

**GREEK THIS YEAR!** (catered by Bar-B-Que Express)

**Hors d'oeuvres:** Tapanade Brucheta, Tyropitas/spanikopita, and Dolmades

**Entrees:** Gyro Lemon Chicken and Mousaka (Greek Lasagna)

**With Greek Rice Pilaf, Pita Bread, Tzatsiki and Humus, and Dessert**

**(Dinner will be served with Compostable plates, cups, and utensils)**

#### TICKETS

**Reserve your tickets now! Capacity of the Lodge is 200 and the event always sells out!**

**\$35 ea Children 5-12: \$15 Toddlers: free**

**To purchase a table for 8 or 10, send in your check with your name and the name of your guests. All tickets will be on a first come first serve basis, and must be purchased in advance.**

**Send checks to:**

**CCSEP c/o Mike Kogan, Treasurer**

**1401 Calumet Avenue**

**Los Angeles, CA 90026**



## ECHO PARK CALENDAR

Event	Date	Location	Comments
<b>EPIA Meetings</b>	1 <sup>st</sup> Thursday, 7:00 pm Jun 3, Jul 1, Aug 5	Williams Hall at Barlow Hospital, 2000 Stadium Way in Elysian Park	Email EPIA to get monthly reminders of meetings and to be on email list.
<b>EPIA Steering Committee Meetings</b>	2 <sup>nd</sup> Monday, 7:15 pm May 10, Jun 14, Jul 12	Call (323) 882-4835 for location	Take an active part in EPIA. Join the Steering Committee
<b>Community Safety Meeting (EPSA)</b>	3 <sup>rd</sup> Wednesday, 2:00 p.m. May 19, Jun 16, Jul 21	GEPNEC Community room 2011 W. Sunset Blvd.	Hosted by Echo Park Security Association. <u>Call 323-860-9914 for meeting location.</u>
<b>Citizens Committee to Save Elysian Park</b>	1 <sup>st</sup> Wednesday, 7:00 pm Jun 2, Jul 7, Aug 4	Williams Hall at Barlow Hospital, 2000 Stadium Way in Elysian Park	Call 213-666-9651 for meeting location
<b>Echo Park Chamber of Commerce</b>	3 <sup>rd</sup> Thursday, 7:00 pm and every Wednesday 1:30 pm	Taix Restaurant.	Call 213-630-3032 for further information.
<b>Greater Echo Park Elysian Neighborhood Council Meeting</b>	4 <sup>th</sup> Tuesday, 7 pm May 25, Jun 22, Jul 27	St. Paul Cathedral Center Great Hall 840 Echo Park Ave Los Angeles, CA 90026	Call (213) 413-3196 for info or visit <a href="http://www.GEPENC.org">www.GEPENC.org</a>
<b>Edendale Library Friends Society</b> >=> ELFS <=<	2 <sup>nd</sup> Wednesday, 7 pm May 12 Jun 9, Jul 14	Edendale Branch Library Community room 2011 W. Sunset Blvd.	Join the library's support group and find out how you can help your neighborhood's branch.
<b>Positive Energy Group of Echo Park and Silver Lake Area</b>	4 <sup>th</sup> Wednesday, 6 - 7 pm May 26, Jun 23, Jul 28	Edendale Branch Library Community room	For info : blog <a href="http://www.positiveenergygroup.blogspot.com">www.positiveenergygroup.blogspot.com</a>
<b>EP Farmers Market</b>	Every Friday, 3pm - 7 pm	parking lot #663 -- half a block south of Sunset Boulevard 323463-3171 x13	
<b>Edendale Book Club</b>	3 <sup>rd</sup> Monday, 6:30 pm May 17, Jun 21, Jul 19		Edendale Branch Library Community room 2011 W. Sunset Blvd.
<b>EPIA NIC committee (Neighborhood Issues)</b>	3 <sup>rd</sup> Wednesday, 7:00 pm May 19, Jun 16, Jul 21	Williams Hall at Barlow Hospital, 2000 Stadium Way in Elysian Park	
<b>EPIAn ways Deadline for August issue</b>	Sunday, July 25		

*Masa* of echo park  
**Bakery & Café**

1800 W. Sunset Blvd (213) 989-1558 [www.MasaofEchoPark.com](http://www.MasaofEchoPark.com)

### ECHO PARK SECURITY ASSOCIATION

Join us for a safe, secure and crime-free  
Echo Park and Angelino Heights.

Since 1991.

Alarm response included (24-hour)

Low cost.

Lowered crime rate

Endorsed by EPIA.

Close relationship with police

Volunteer run

Founded by EPIA members.

EPIA can be reached at: [EpiaMail@yahoo.com](mailto:EpiaMail@yahoo.com), P.O. Box 261021, Los Angeles CA 90026 or (323) 882-4835



POLICE	
Police Emergency: Need Police Car	911
Spanish Line	213-928-8222
Narcotic Hotline	1-800-662-2878
Child Abuse Hotline	1-800-540-4000
Police Non-Emergency	1-877-275-5273
LAPD Air Support Division	213-485-2600
RAMPART DIVISION	
Rampart Police Division Desk	213-484-3400 ext 1
Rampart Vice Unit	213-485-4080
Rampart Division Watch Commander	213-485-4062
Senior Lead Officer Ford	213-793-0775
Community Relations	213-484-3400 ext 2
China Town Sub-Station	213-621-2344
NORTHEAST DIVISION	
Northeast Desk	213-485-2563
Northeast Report Unit	213-485-2563
Senior Lead Officer Bobby Hill	213-793-0760
Senior Lead Officer Al Polehonki	213-793-0763
Northeast Detectives	213-485-2566
Northeast Community Relations	213-485-2548
Northeast Gang Detail	213-847-4263
Northeast Youth Referral Program	213-847-3375
Northeast Records	213-485-2568
Release of Impounded Vehicles	213-485-2566
CITIZEN COMPLAINTS	
Department Building & Safety	888-524-2845
Department of Health	1-800-427-8700
Department of Transportation	213-580-1177
Department of Water & Power	800-342-5397
Parking Enforcement	311
Loose/Stray Animals/Barking Dogs	888-452-7381
LA County Department of Consumer Affairs	213-974-1452
Legal Aid Client Referral	1-800-399-4529
Operation Bright Lights	311
Street Lighting Repairs	311
Professional Helicopter Pilots Association	213-891-3636
GRAFFITI RELATED ISSUES	
Report Graffiti	311
Free Paint	311

CLEAN-UP	
Abandoned Vehicles	311
Cars Parked in Yards	1-888-524-2845
Hazardous Waste Disposal Information	1-800-988-6942
Parkway and Median Maintenance	1-800-996-2489
Storm Drains	213-485-5391
Trash and Bulky Item Pick Up	1-800-773-2489 FAX 213-847-2261
L. A. Fire Department Brush Clearance	818-374-1111
COMMUNITY SERVICES	
Copies of Crime and Traffic Reports	213-485-4193
El Centro del Pueblo	213-483-6335
Echo Park Library	213-250-7808
Edendale Library	213-207-3000
Echo Park Recreation Center	213-250-3578
Echo Park Chamber of Commerce	213-630-3032
Dodger's Security	323-224-1363
Dodger's Neighborhood Focus	323-224-2636
Dodger's Community Affairs	323-224-1435
Central City Action Committee	213-241-0908
North Central Animal Shelter	213-847-1416
L.A. City Department of Aging	800-834-4777
Elysian Park Ranger	323-913-4688
Health Information	211
Los Angeles City Information	311
Los Angeles City Information website	www.lacity.org
Congresswoman Lucille Roybal-Allard	213-628-9230
State Senator Gil Cedillo	213-612-9566
Assemblyperson Kevin de Leon	323-225-4545
LA County Supervisor Gloria Molina	213-974-4111
Mayor's Office <a href="mailto:mayor@lacity.org">mayor@lacity.org</a>	213-978-0600
Neighborhood Prosecutor Program	213-847-8045
POLITICAL	
1st District Ed Reyes	213-485-3451
13th District Eric Garcetti	323-957-4500
Congressman Xavier Becerra	213-483-1425
Congresswoman Lucille Roybal-Allard	213-628-9230
State Senator Gil Cedillo	213-612-9566
Assemblyperson Kevin de Leon	323-225-4545
LA County Supervisor Gloria Molina	213-974-4111
Mayor's Office <a href="mailto:mayor@lacity.org">mayor@lacity.org</a>	213-978-0600
Neighborhood Prosecutor Program	213-847-8045



## SAVE the LARGEST AFTERSCHOOL PROGRAM IN THE CITY OUR: LIBRARIES

*by Joelle Dobrow, President Edendale Library Friends Society (ELFS)*

If the present budget submitted by Mayor Antonio Villaraigosa should pass, our libraries may shrink to a five-day schedule starting as soon as June 15th. If you feel that five-day-a-week library service is unacceptable, then write a letter or postcard to your councilmember before the May 10th budget meeting. Or write to the President of the City Council, Eric Garcetti, City Hall, 200 N. Spring St. Los Angeles, CA 90012. Mr. Garcetti is also the Councilmember for Edendale Library.

For your convenience, ELFS has preaddressed postcards that you are invited to use to jot down your comments to the City Council. ELFS will take care of postage and handling. The postcards are available at the ELFS Wednesday book sale or look for postcards at the Edendale Library volunteer desk. Please come in, write your postcard and leave it with the ELFS.

Some facts that might help you in composing your letter:

- \* 17.3 million items were checked out
- \* 1.3 million citizens have library cards with

191,000 new cards this year alone

\* The Library provides the best value for tax dollars - providing free access to computers, books, online homework assistance, job search assistance and countless other services to provide entertainment and education

\* The Library provides the **largest afterschool program in the city** offering a safe environment.

\* If the library has to go to 5 days per week- it will be the first time in its 138 year history. The Library has already twice taken service hour cuts

\* The city's budget is \$6.7 billion. Returning only \$8 million to the library budget can restore 6-day-a-week service at all libraries.

\* The proposed budget eliminates nearly 30% of library staff

Many loud voices are needed at this time. You may get more information, petitions, postcards, bumper stickers and buttons from [www.SaveTheLibrary.org](http://www.SaveTheLibrary.org).

Time is critical so please act NOW!

### EDENDALE LIBRARY

#### Library Hours

Mondays	10:00 am – 8:00 pm
Tuesdays	12 noon – 8:00 pm
Wednesdays	10:00 am – 8:00 pm
Thursdays	12 noon – 8:00 pm
Fridays	1:30 pm – 5:30 pm
Saturdays	10:00 am – 6:00 pm
Sundays	<b>CLOSED</b>

#### Library Address

Edendale Branch Library  
2011 W. Sunset Boulevard  
Los Angeles, CA 90026  
**Phone** (213) 207-3000  
**FAX** (213) 207-3097



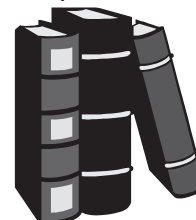
### ECHO PARK LIBRARY

#### Library Hours

Mondays	10:00 am - 8:00 pm
Tuesdays	12:00 pm - 8:00 pm
Wednesdays	10:00 am - 8:00 pm
Thursdays	12:00 pm - 8:00 pm
Fridays	1:30 pm - 5:30 pm
Saturdays	10:00 am - 6:00 pm
Sundays	<b>CLOSED</b>

#### Library Address

Echo Park Branch Library  
1410 W. Temple Street  
Los Angeles CA 90026  
**Phone** 213.250.7808  
**FAX** 213.250.3744



World Wide Web Address <http://www.lapl.org>

• 24 Hour Renewal: 888-577-LAPL





## A Little Bit of Magic

by Susan Borden

Here's a list of seemingly unrelated hard-working little corners around Echo Park and its environs: FIX Coffee, Starbucks in the Ralphs shopping center, the triangular lot on Montana Street opposite KFC, the new Silverlake library, the former pottery shop on Echo Park Avenue and Avalon, and the Montana Street mini-mall where a recent fire damaged the laundromat.

What do these half dozen nooks and crannies of Echo Park have in common? Well, the tip-off is that they're all street corners. Street corners are the ideal configuration for gas stations. Yes, every one of the locations mentioned above was formerly a corner gas station.

Today all those small businesses are gone. The independent gas station owner has been replaced by a few corporate behemoths situated along the main boulevards where they can best serve drive-through commuters.



There is one exception, however. Echo Park still has a last holdout—Magic Gas, run by Zina Mikyelyan and Art Bagousky, is the only mom-and-pop gas station remaining in our neighborhood. Residents should be proud of the fact that, at the corner of Morton and Echo Park Avenues, Magic Gas is a convenient (and mostly locals-only) place to fill 'er up!

## No Fire Sale Any Time Soon

by Darren Hubert

Quick Real Estate Update...

Short sales are finally catching on as a foreclosure alternative as lenders and servicers deal with a huge inventory of mortgage defaults that will continue to grow over the short term.

There are an estimated three million mortgages in suspended animation with troubled borrowers living home and who haven't made a payment for six months or more.

In addition, there is a large pipeline of loan modifications and foreclosures in progress. It has been expected that the sale of this huge inventory would overwhelm demand and drive down home prices, but it hasn't happened yet. And now it is believed that it may not happen at all.

"It seem like all the actions the banks and government have taken is to avoid a fire sale," according to Robert Young of

(Continued on page 10)



CONSTRUCTION-DESIGN  
JOHN BORDEN  
2024 VALENTINE ST  
L.A., C.A. 90026

323-665-0318

### Borden Construction

LICENSED #455256



Member  
American Optometric Association

**Fredy Perez, O.D.**  
Examination and Treatment of the Eye

1509 Sunset Blvd.  
Los Angeles, CA 90026

By Appointment  
(213) 250-5768

## ACRO ENERGY

Giving you the power

The sun never sends a monthly bill!®

We can put solar on your roof for little  
or no money down

### MAKE YOUR OWN ELECTRICITY

call for a  
free site visit & estimate  
(909) 865-8561

[www.eesolar.com](http://www.eesolar.com)

EXPERT • EXPERIENCED • ENVIRONMENTALLY AWARE

Steven Arthur, Efficient Energy Specialist

C-10/C-46 lic.#827074



(Continued from page 9)

### No Fire Sale

Citigroup. Despite the carrying cost, the government and the banks are managing liquidations to avoid this.

As a result home prices may remain relatively stable for several years. But there is a "trade-off," Mr Young said. "We aren't going to see a rebound (in prices) either."

We can expect to see a large increase in short sales, where the distressed borrower sells the property (for less than the outstanding mortgage) with the approval of the lender/investor and walks away debt free.

The Echo Park real estate market has been quite resilient through these tough times. REO homes that list in the \$300,000 to \$400,000 range usually sell with multiple offers well over asking.



1911 SUNSET BOULEVARD  
LOS ANGELES, CA 90026  
(213) 484-1265

*Dynamic. Stylish. Seriously. Cool. Hip*

## It's Thai

### Hometaurant



**NO MSG. NO HYDROGENATED OIL  
VEGETARIAN DISHES AVAILABLE**

MON-FRI AM- 11:00-10:30-PM

1311 Glendale Blvd

SAT- 11:30-AM-10:30-PM

LA, CA 90026

SUN-11:00-AM-10:00-PM

P:213-484-9383

[www.its thai.com](http://www.its thai.com)



GREEN RESTAURANT ASSOC.  
FREE DELIVERY. MINIMUM \$ 15- WITHIN 3 MILE RADIUS  
CATERING TRAY AVAILABLE  
VISA. MASTER ACCEPTED. MINIMUM \$15

30 Year resident of  
**90026**

Your local Real Estate Professional

### Darren Hubert

(DRE: 01330183)

[www.UrbanHillsides.com](http://www.UrbanHillsides.com)

[Darren@UrbanHillsides.com](mailto:Darren@UrbanHillsides.com)

323.898.2991

HRC (Certified Home Retention Counselor)  
CFS (Certified Foreclosure Specialist)  
Experienced Short Sale agent



(213) 484-1116

## MELBA MORRIS

Ballet Studio

- Pre-Ballet Thru Advanced
- Boys Program
- Workshop

1625 GLENDALE BLVD.  
LOS ANGELES, CA 90026





## Central City Action

by Gloria

Gosh, hate to see this little paper dissolve as it is always been filled with tidbits from the neighborhood. Soooo, let's see, what has CCAC been up to lately?

Our staff is finally getting adjusted to the traditional school year. Instead of the kids coming in at all hours of the day, they all come in at the same time. The center quickly fills up with kids doing homework, playing games and doing research on the computer. We have about 10 new kids from various junior high schools. To me they all look as if they are related and guess what? They are related. Most of them are boys, OMG boys in junior high sometimes have to be watched more closely.

Sam is doing his best to indoctrinate the new kids regarding rules of the road around CCAC. Still, keeping them inspired is more than a full time job. Some of the kids who come here have never been anywhere outside their neighborhoods. We have always provided field trips to interesting places as well as to local sporting events. If a lunch is needed we always send home a field trip permission slip explaining. We went to a Dodger game recently with a lot of our new kids. Sam likes to take them to Mac Donald's before we go as the food at the stadium can be expensive.



One of our new kids said he was going to pay for food at the stadium. So when the youngster wanted to go and buy some food, Sam went with him to make sure he could find his way back. They went to the regular hot dog vendor and no, he did not want a hotdog. He told Sam he wanted a hamburger so off they went to Carl's Junior. As the center member in training looked and looked at the menu quizzically as he walked up to the counter. He looked up; he looked down and looked over the counter until finally Sam asked him what he was looking at. The youngster replied the 99 cents hamburger so Sam told him that they did not have them at Dodger Stadium food concessions. Sam then asked how much money do you have and he replied \$1.00. He thought he could get one after all

it was a Curls' Junior. AHHHHH, another youngster learned a valuable lesson-eat before you go to Dodger Stadium!

While the kids were off for the Spring Break, we held a rummage sale for one day. It was very profitable as the kids went to the movies, arcades and had pizza and cake on their last day of vacation. The kids will all be off school this summer. The staff is already thinking about what we are going to do for the summer.



I would like to mention that we are accepting used inkjet cartridges, laser cartridges, used cell phones and laptops. Just drop them off at the center and thank you in advance.

## LIONS CLUB

OF LOS ANGELES  
THE L.A. "HOST" CLUB



We Serve  
FIGHTING BLINDNESS,  
PRESERVING SIGHT, AND  
SUPPORTING OUR YOUTH.

THE ECHO PARK THING TO DO:  
Join us in service  
to the community.

For information, contact Dr. Fredy Perez  
(213) 250-5768 • fperez001@aol.com



## FROM THE DODGERS

### Monthly Flea Market at Dodger Stadium

In a letter to all neighbors, Noel Pallais, Manager, Neighborhood Relations, for the Los Angeles Dodgers wrote that the Dodger organization had been approached by an antique and collectibles promoter about the possibility of the parking lot handling a flea market. The Dodger staff conducted a thorough and extensive review and were "pleased to discover that his events have been well received in other communities".

With the review the Dodgers decided to move forward with a once a month flea market. The markets are scheduled for the third Sunday of every month (as long as there isn't a game scheduled) commencing on July 18th and going through February, 2011.

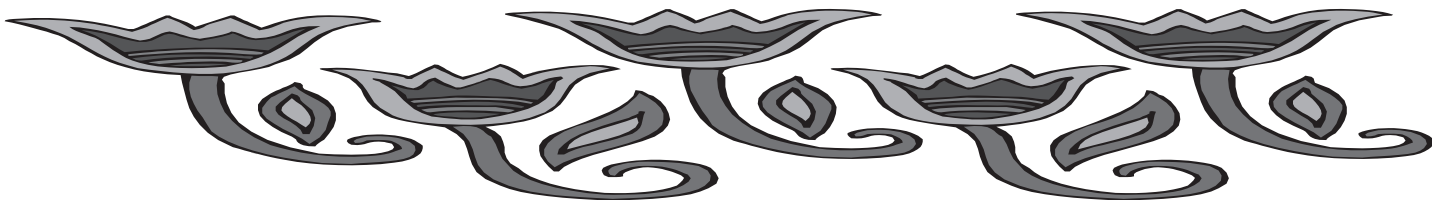
Pallais wrote that "we cannot stress enough that we made it abundantly clear to the promoter that the event must be first rate and in good taste. All vendors interested in participating must be cleared and approved by the promoter through an extensive vetting process".

"In an effort to minimize any impact on neighbors", the set-up for the event will take place

on Saturday during the day with the starting times on Sunday scheduled for 7:00 AM for VIP's and at 9:00 AM for the general public.

Also, according to Palais, it is the Dodgers' intention to adequately address any community traffic concerns, all incoming traffic will be directed to enter the Stadium through EITHER the Sunset Gate (Stadium Way/Elysian Park Avenue) or the Downtown Gate (adjacent to the 110 south exit/Stadium Way). Additionally, all event announcements will make specific notation that these will be the only two gates that will be open. To that end, there will be an appropriate number of Dodger security and transportation personnel on hand to help manage the event.

Pallais invited those with any questions to contact him at (323)224-2636.



### We need your help

This year we had donations from printers, other community groups and residents that has allowed us to continue to product our newsletter. Due to the cost of printing we run a deficit with each newsletter produced. This is not something that the EPIA can sustain for a long period of time if donations stop coming in. Therefore we are attempting to raise funds for continued support of the newsletter.

Thank you in advance for your Support.

Donation Amount: \_\_\_\_\_

All contributions are appreciated equally

- ☐ For Newsletter Only
- ☐ For any EPIA community project or event

Send your Tax Deductible Check Payable to:  
Echo Park Improvement Association (EPIA)  
PO Box 261021, Los Angeles, CA 90026

*Opinions expressed in this newsletter are those of the writers and do not necessarily reflect the position of EPIA.*

EPIA can be reached at: [EpiaMail@yahoo.com](mailto:EpiaMail@yahoo.com), P.O. Box 261021, Los Angeles CA 90026 or (323) 882-4835